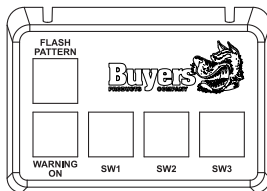


Multi-purpose 5-switches Control Panel

Wiring

- RED** to +VDC
- BLACK** to -GND
- YELLOW** Flash Pattern [momentary switch]
- WHITE** Warning ON [toggle switch]
- GREEN** SW1 [toggle switch]
- BLUE** SW2 [toggle switch]
- PURPLE** SW3 [toggle switch]



Switch Specification

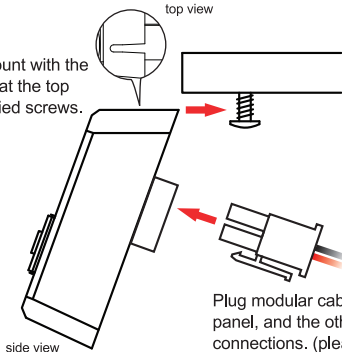
- Input Voltage: 10~30 VDC
- Input Current: 0.2A / port
1.0A / 5 ports
- Output Voltage: 10~24 VDC
- Output Current: 0.2A / port
- Fuse Recommended: 2A

Recommended Relay Specification (User-supplied)

- Input Voltage: 10~24 VDC
- Input Current: < 200mA

Screw Mount Installation

Hanging Mount with the screw slots at the top and 2 supplied screws.



NOTE: Connect only the RED and BLACK wires to the power supply.

Plug modular cable to the back of the panel, and the other end to respective connections. (please refer to **Wiring**)