



IMPORTANT SERVICE ALERT

16-TSB19

MD68/MD75 MOLDBOARD WELDING

APPLIES TO:

MD75 Moldboard 16020420

MD68 Moldboard 16020410

It has been determined that a small number of MD moldboards were shipped with missing welds due to a programming error.

This repair will restore the moldboards to full production intent and strength. Corrective and Preventative actions have already been taken on all stock.

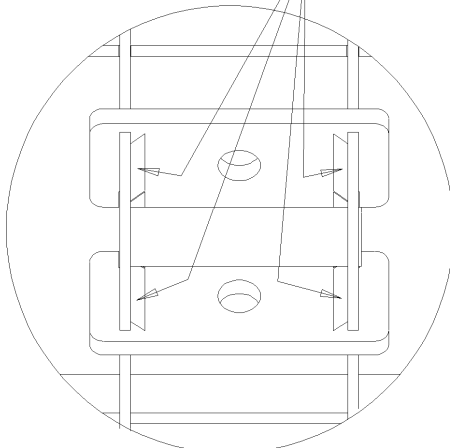
Inspection does not require disassembly of the plow. The attached pages detail the location of these welds, the inspection procedure, repair procedure, and warranty procedure.

16-TSB19 MD68/MD75 Weld Inspection Procedure

1. Stand behind the moldboard on the Drivers Side – please note that drivers side trip spring is not shown for clarity. It does NOT need to be removed for inspection.
2. The welds in question are on the inside corners of the trip ribs and trip plates as shown below. It is only necessary to inspect the upper corners. There SHOULD NOT be welds where the sector trip stop plate hits the moldboard trip stop plate. The welds in question are BETWEEN the trip ribs on the moldboard as shown below.
3. If welds are missing, contact your dealer immediately.
4. If welds are present, no further action needs to be taken.

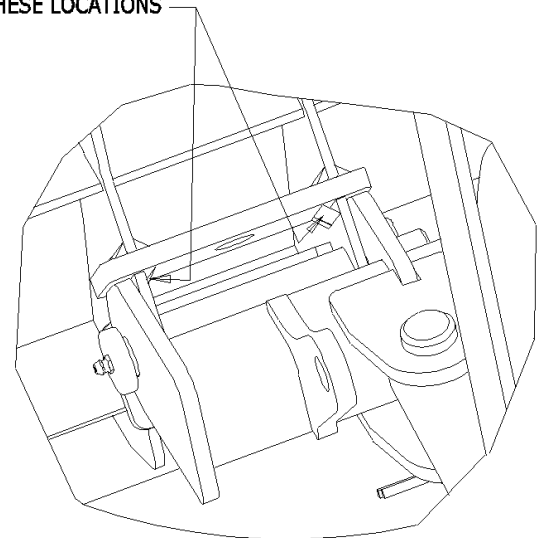
4X (PS AND DS SIDES)

1/4

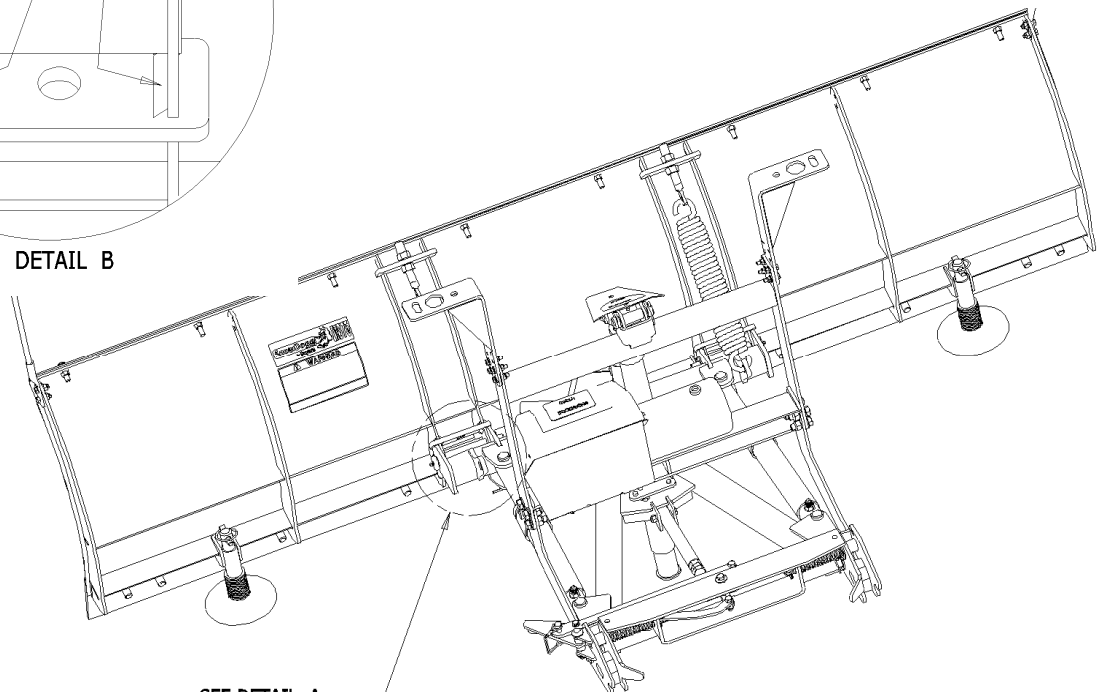


DETAIL B

CONFIRM WELD IN THESE LOCATIONS



DETAIL A



SEE DETAIL A

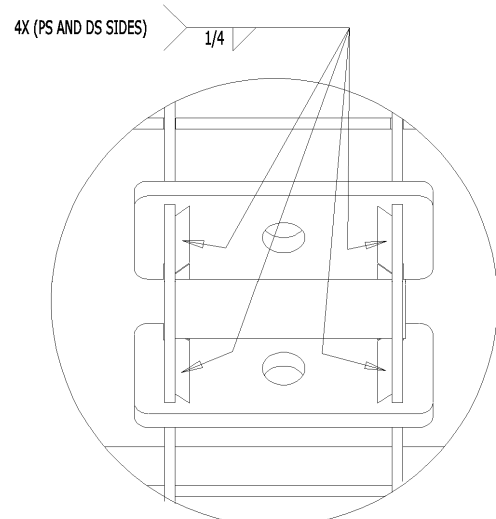


16TSB-19 MD68/MD75 Weld Repair Procedure

Estimated Time – 30 minutes

Materials Required: *Standard tools*
 Welding equipment
 Black spray paint

1. Leave the plow mounted on the truck (if possible).
2. Remove the two trip springs and eye bolts from the moldboard and set aside.
3. Remove the two trip pins, washers and cotter pins between the moldboard and sector and set aside.
4. Lay the moldboard on the ground – skin side down. This will allow easy access to the trip knuckles.
5. Remove/grind paint from area to be welded
6. Weld as shown
7. Paint the welded area with black spray paint.
8. Reassemble the moldboard to the plow.



DETAIL B

